

Diagram #1

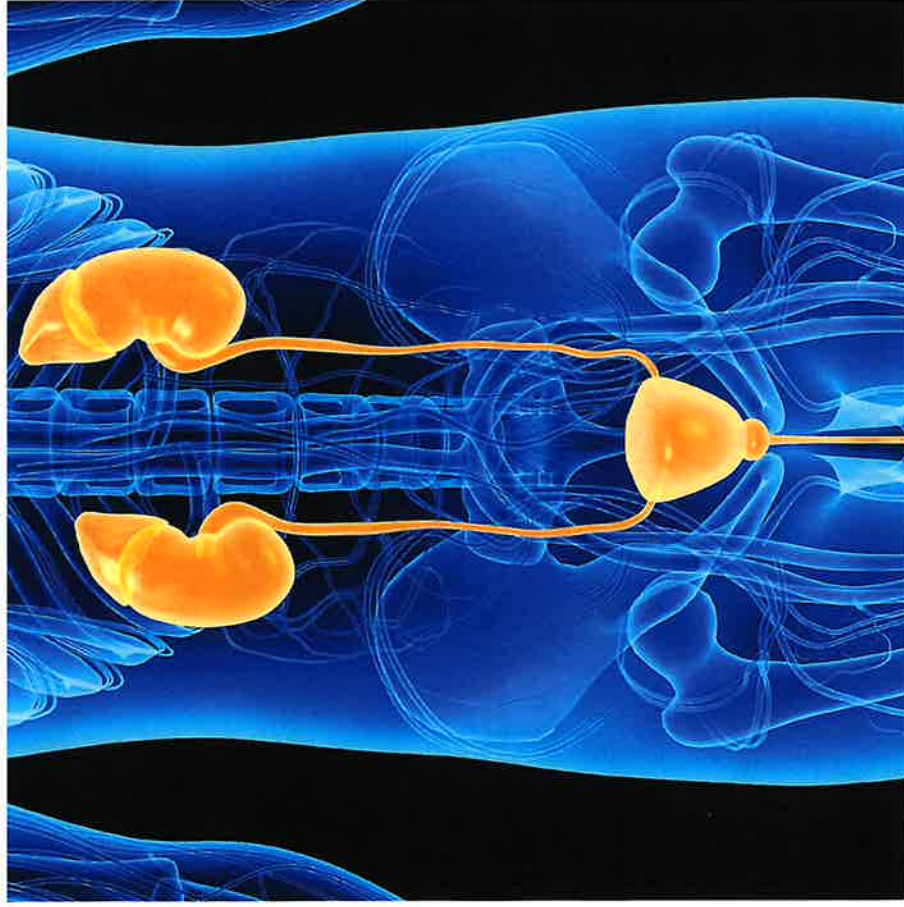
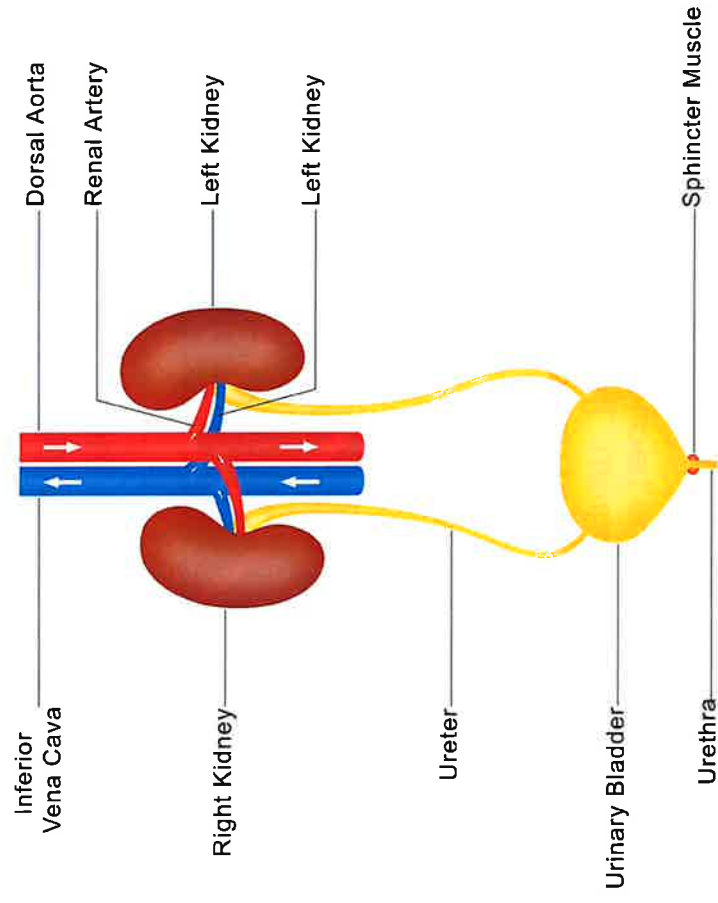


Diagram #2



Explore It! #1

Use diagram #1 and #2 for the following questions.

1. What body system is represented in the diagrams?
2. What do you think the main purpose of that system is?

© KeslerScience.com

The function of the **excretory system** is to filter the waste out of the blood and remove it from the body. It is sometimes called the **urinary system**.

The **kidneys** are the bean-shaped organ near the top of the diagram. Their job is to filter out waste from the blood and send the urine away for removal.

1. Do you think we need both kidneys to survive?

© KeslerScience.com

Explore It! #2

Explore It! #3

After the urine has been created it is sent down the **ureters** (small tubes that connect the kidney and bladder) to the **bladder**.

The bladder acts as a storage for urine until it gets to the point where it fills up and needs to be removed. From there it is sent out the **urethra** and out of the body.

© KeslerScience.com

Explore It! #4

1. Use the diagrams to describe the process of how urine is created and removed from the body.
2. What role does hydration (drinking enough water) play throughout the human body?

Excretory System Modified

Excretory System

The main function is to _____ blood and remove _____ waste from the body.

Works with the _____, _____, _____ and _____ systems to maintain a balance (_____) of water, ions pH, blood pressure, calcium and red _____ cells in the body.

Kidney

Main function is to filter _____ products out of the blood passing through them. Blood enters through renal _____ and passes back to circulation through the renal _____.

Works with the _____ system in the formation of red blood _____ and the circulatory system to remove _____ from the blood.

Ureters

Muscular _____ that carry _____ from the kidneys to the bladder.

_____ cm in length

Inner diameter about _____

Bladder

Pear shaped organ that holds _____ to allow for urination to be infrequent and _____.

Capacity - _____

Emptying bladder takes place by _____ of smooth _____ (detrusor)

Urethra

Passage way through which _____ is discharged from the _____ out of the _____.

Longer in the male than _____

Average daily output of urine is _____ liters/day.

Accessory Organs

Not part of the path of urine, but play a part in removal of waste.

Liver – filters blood from the _____ tract

Lungs – remove _____ (waste product) so it can be exhaled

Skin – secretes a fluid waste called _____ or Perspiration

Hydration

Water makes up half of your body _____.

You lose water when you go to the _____, sweat, and _____.

If you don't replace the _____ you lose you become _____.

Symptoms of dehydration

Little or no _____, or urine that is _____ than usual _____ or fatigue

Extreme _____

Dizziness

Diseases/Disorders of the Excretory System

Urinary tract _____ - UTI

Kidney _____ - obstruction of the urinary _____

Cystic _____ disorder

_____ of the liver

_____ failure

Cancers of Kidney, bladder, ureter, prostate